



Implementing the Strategic Action Programme for the South China Sea and Gulf of Thailand (SCS SAP Project)

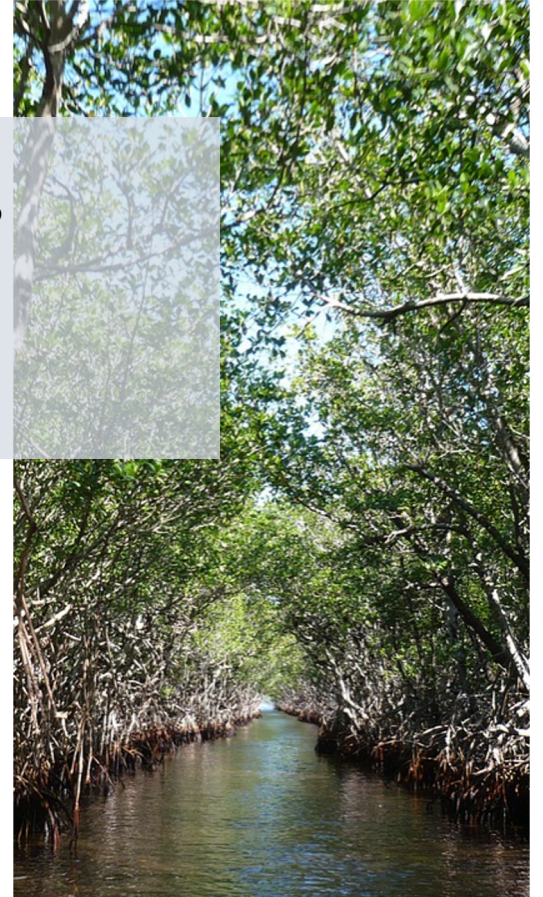
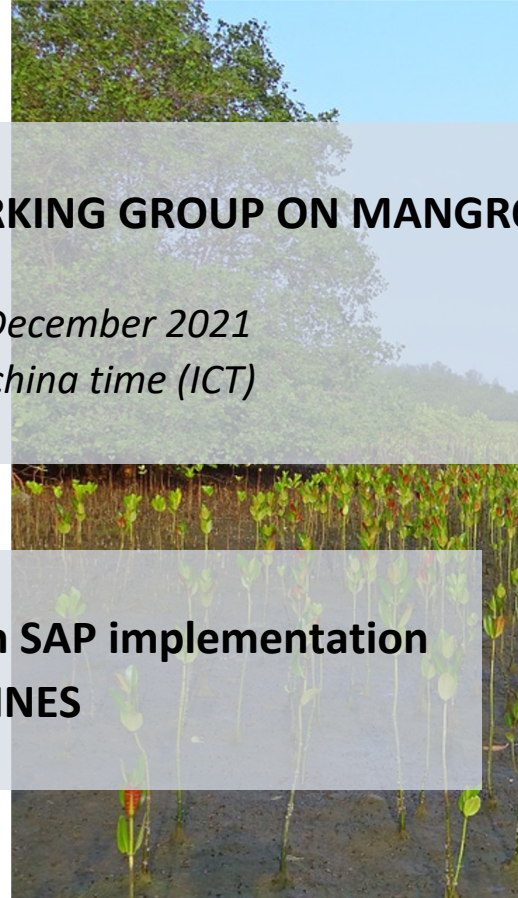


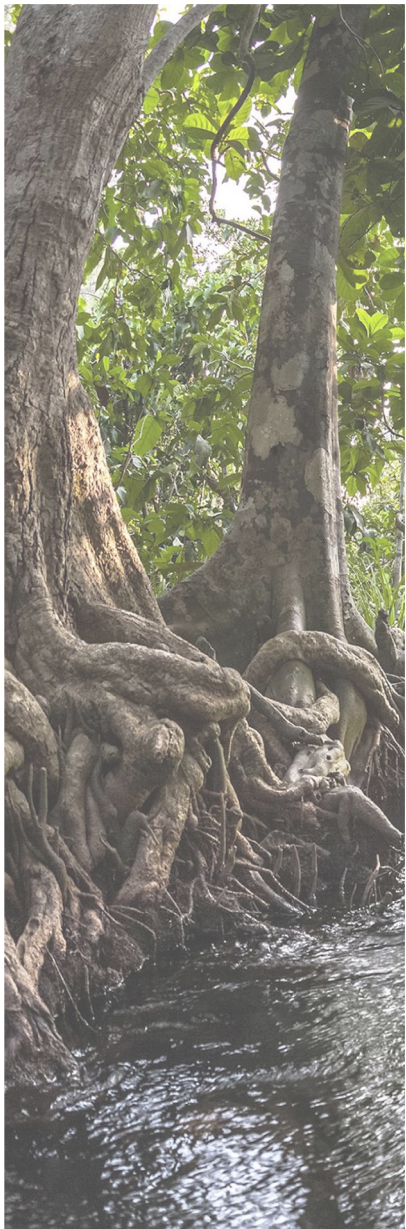
FIRST MEETING OF REGIONAL WORKING GROUP ON MANGROVES

*Teleconference, 1 December 2021
13.00 – 17.00 Indochina time (ICT)*



**National Presentations on SAP implementation
PHILIPPINES**





SAP Evaluation 2008-2021

- *Institutionalization of the Coastal and Marine Ecosystems Management Program (CMEMP) through the DENR Administrative Order 2016-26, and NIPAS through the RA 11038;*
- *Issuance of a joint Technical Bulletin between ERDB and BMB (TB no. 2017-01) or the “Guidelines on the enrichment planting of mangroves”, and the like;*
- *On going initiatives on the possible expansion of the mangroves areas to be protected under PP 2151 and 2152; and*
- *Creation of the DENR Technical Working Group on the Reversion of the Abandoned, Undeveloped and Underutilized Fishponds.*

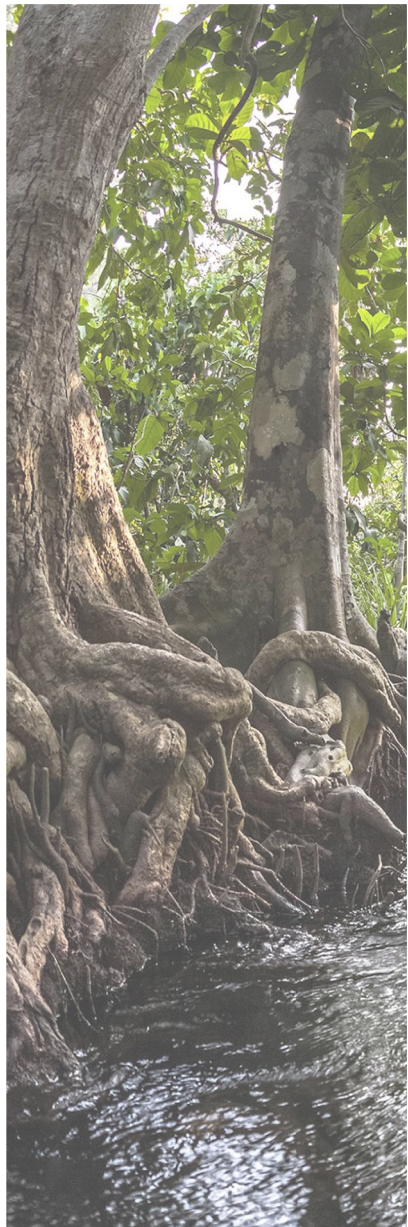




SAP Evaluation (2008-2021)

SAP Output/Target	Implication at the national level	Details at sites
1.1.1 Declaration of 57,400 ha of mangrove as National Parks and Protected Areas	1,421 hectares of mangrove areas will be proclaimed as PAs	Busuanga, Palawan (778.0 has) or Coron, Palawan (543.80 has)
1.1.2 Designation and plans for the management of 166,600 ha of mangrove as non-conversion, sustainable use areas	4,357.47 hectares has been designated as non-conversion/sustainable use areas	Busuanga, Palawan (1,618.79 has) Coron, Palawan (2,738.60 has)
1.1.3 Reform of laws and regulations for the sustainable use of 602,800 ha of mangrove forest	2 sites with a total of 4,357.47 hectares have been implemented with reforms/laws for the sustainable use of areas as indicated in their ECAN mgt plan	Busuanga, Palawan (1,618.79 has) Coron, Palawan (2,738.60 has)
1.1.4 Replanting of 21,000 ha of deforested mangrove land	4 sites in Palawan with a total of 590 hectares of deforested mangrove areas have been replanted, with a remaining of 204 hectares which needs to be replanted	Busuanga, Palawan (177 has) Coron, Palawan (279 has) Ulugan Bay, Palawan (124 has) Quezon, Palawan (10 has) San Vicente, Palawan (204 has)
1.1.5 Biodiversity increased for 11,200 ha of mangrove forest via enrichment planting	32 hectares out of 93 hectares of mangrove forests has been implemented by enrichment planting	Busuanga, Palawan (32 has) Coron, Palawan (19 has) San Vicente, Palawan (11 has) Ulugan Bay (12 has) Quezon, Palawan (24 has)
1.1.6 Established mechanism for monitoring management, ecological and socio-economic indicators at 26 sites [based on SAP results framework]	Nationwide implementation of policies	BMB-ERDB Joint ERDB DENR-BMB-Policy Brief No. 7 "Efficient Mangrove Planting" DENR-BMB TB 2019-04 "Technical Guide on BAMS for Coastal and Marine Ecosystems"





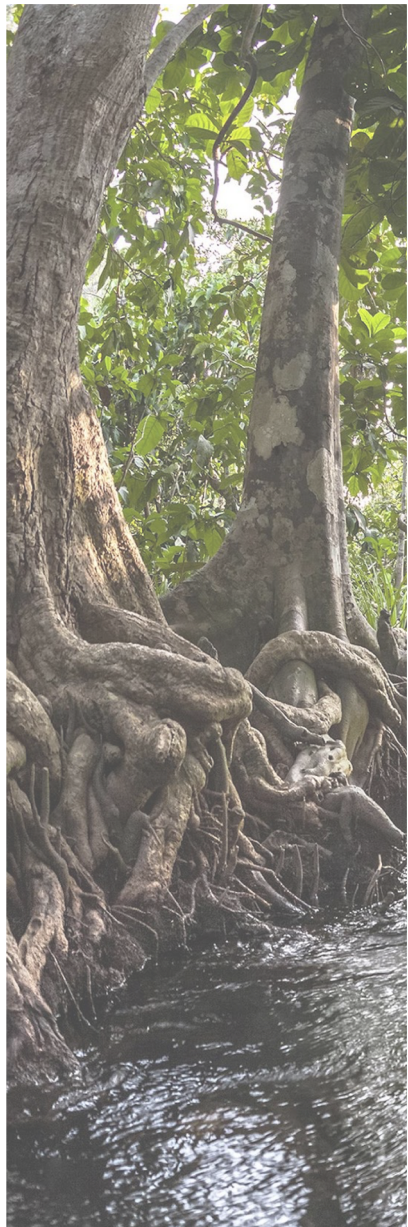
SAP Implementation: Best Practices

- *Regular consultation and monitoring with the concerned agencies (i.e. DENR, PCSD and the academe) to maintain a proactive participation of a broad range of stakeholders including local communities in achieving our targets under mangrove component.*



SAP Implementation: Challenges

- *Unsustainable and illegal utilization of mangrove resources in the country (i.e. cutting and conversion to fishponds).*
- *Lack of public awareness on the importance of the mangrove forests and their resources, overlapping functions and conflicting policies and legislation of different national government agencies and the LGUs*
- *Less involvement of stakeholders in managing the mangrove resources.*
- *Institutional constraints in the management and administration of the Philippine mangrove forests*
- *Lack of a comprehensive research, development program, and technology on the production, rehabilitation, utilization, economics, marketing and other social aspects of mangrove management.*
- *Absence of harmonized institutional data on the extent and cover of mangrove areas in the Philippines.*

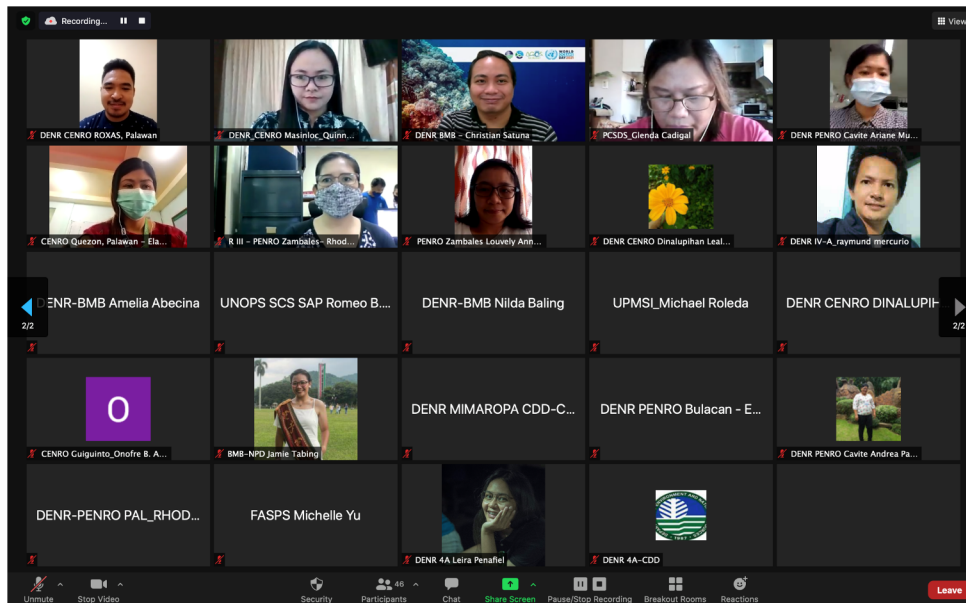
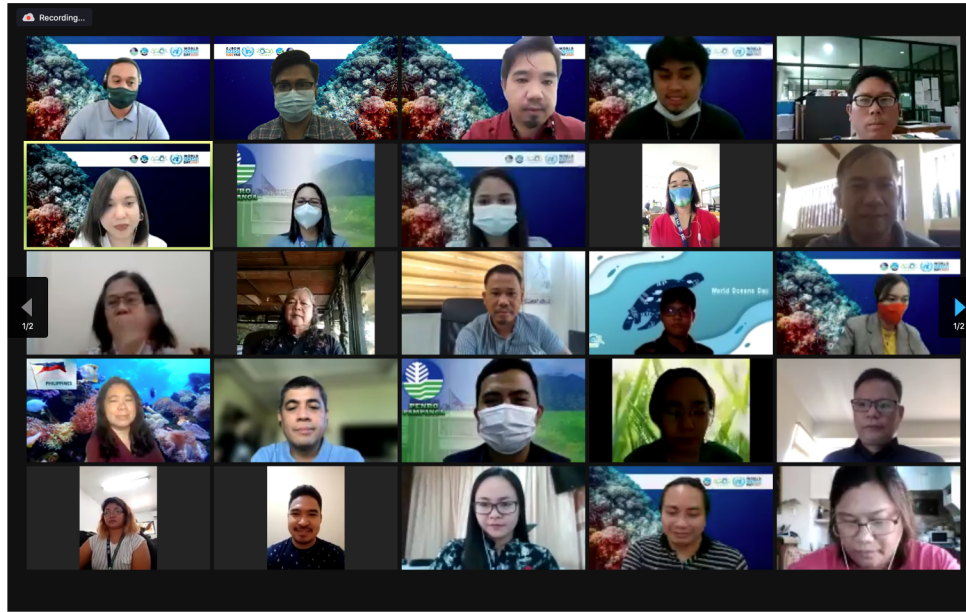




SAP Implementation: Consultations

- *Last June 10- 11, 2021, the DENR- Biodiversity Management Bureau conducted an orientation workshop on the implementation of SCS- SAP for wetlands and mangrove component.*
- *Representatives from DENR Regional and Field Offices from Regions 3, and MIMAROPA, as well as from the Palawan Council for Sustainable Development attended the said workshop.*





Implementing the Strategic Action Programme for the South China Sea and Gulf of Thailand (SCS SAP Project)



SAP Implementation: Site Selection

OUTPUT	ORIGINAL PROPOSED SITES	INCEPTION PHASE PROPOSED SITES	NEW BASELINE TARGET	STATUS
1.1.1 Declaration of mangrove areas as national parks	Busuanga, Coron, San Vicente, Ulugan, San Jose, Subic, Quezon	Busuanga, Palawan	778 has	Php 1,000,00.00 Php 350,000.00
1.1.2 Designation and plans for the mgt of 166,600 has of mangrove as non-conversion, sustainable use areas		Coron, Palawan (631 has)	643.80 has	*On-going with cofinancing
1.1.3. Reform of laws and regulations for the sustainable use of 602, 800 of mangrove forest		Busuanga, Palawan	1,618.79	Accomplished (ECAN Management Plan both for Busuanga and Coron)
	Coron, Palawan	2,738.68		





SAP Implementation: Site Selection

OUTPUT	ORIGINAL PROPOSED SITES	INCEPTION PHASE PROPOSED SITES	NEW BASELINE TARGET	STATUS
1.1.4 Replanting of 21,000 ha of deforested mangrove land	Busuanga, Coron, San Vicente, Ulugan, San Jose, Subic, Quezon	Busuanga Coron San Vicente Ulugan Bay Quezon	177 has 279 has 204 has 124 has 10 has	Accomplished Accomplished Accomplished
1.1.5 Biodiversity increased for 11,200 ha of mangrove forest via enrichment planting		Busuanga Coron San Vicente Ulugan Bay Quezon	32 has 19 has 11 has 12 has 24 has	Accomplished
1.1.6. Established mechanism for monitoring, mgt, ecological, and socio economic indicators at sites based on SAP indicators		N/A		BMB-ERDB Joint ERDB DENR-BMB-Policy Brief No. 7 “Efficient Mangrove Planting” DENR-BMB TB 2019-04 “ Technical Guide on BAMS for Coastal and Marine Ecosystems

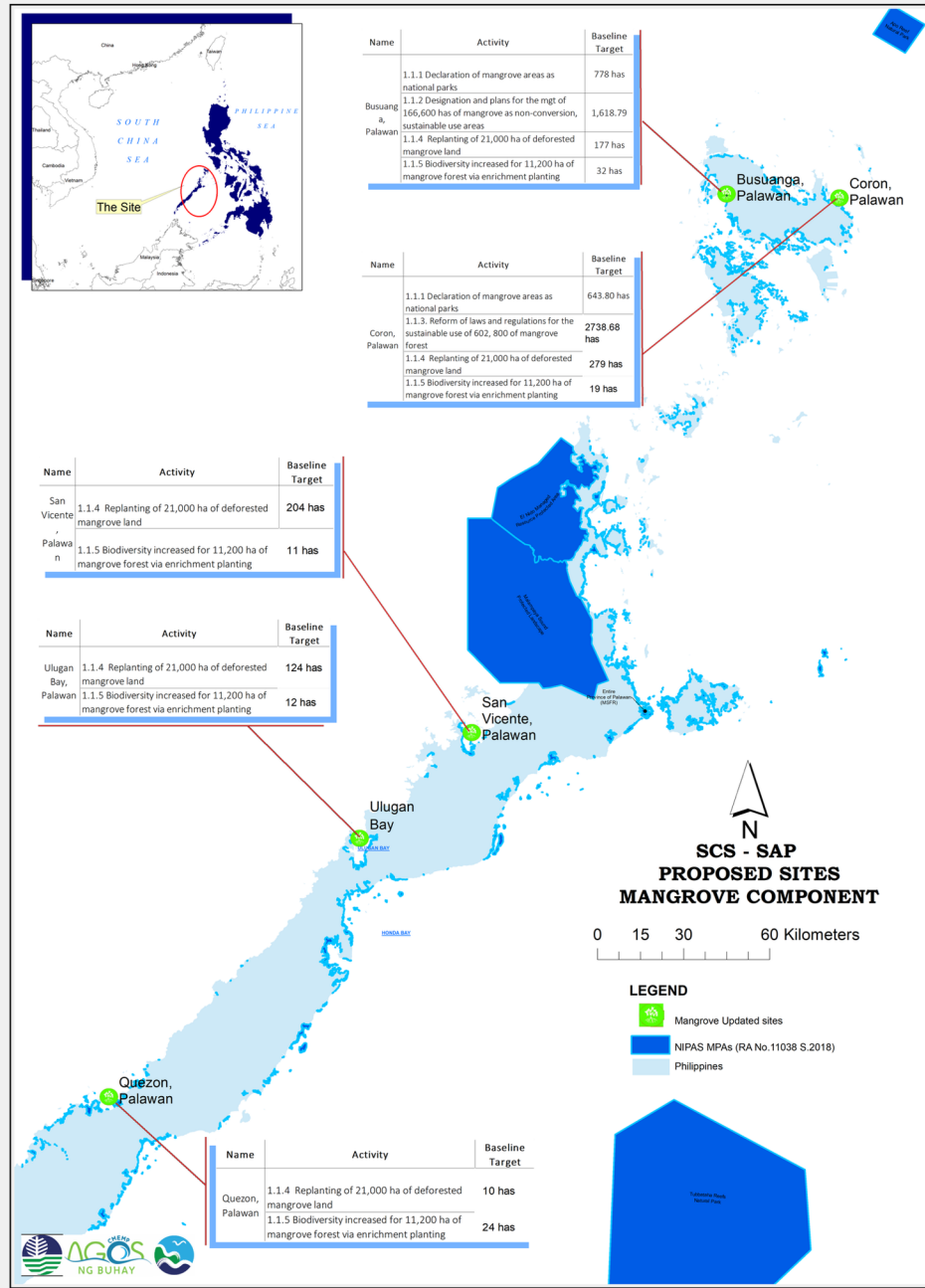




SAP Implementation: Site selection

- *Present the sites and rationale for any change. Use a map if available*
- During the series of consultations, workshops, and write shops it was determined that the available areal extent for interventions in Subic was only 1.4 hectares. Considering the insignificant size that can contribute to the attainment of Output 1.1.5 (Enrichment Planting) which will entail substantial investments and logistical requirements, the SEA deemed it appropriate to drop the site in Subic;
- The site in San Jose was dropped due to lack of information as well as participation from local partners during the Inception Phase;
- Based on current costs of replanting as well as enrichment planting of Mangroves ranging from PHP 38,700 to 50,700 (\$ 806.25 to 1,056.25), the target hectarage for replanting of 2000 has and enrichment planting of 1000 has will entail a total cost ranging between PHP 116,100,000 to 152,100,000 (\$2,418,750 to 3,168,750). For this reason, the SEA decided to reduce the areal extents significantly to fit into the available budget.





SAP Implementation: Site selection

Implementing the Strategic Action Programme for the South China Sea and Gulf of Thailand (SCS SAP Project)

SAP Implementation: Activities

- ***Declaration of mangroves as National Parks and Protected Areas***
 - Review of the status of the process in establishment of the PA
 - Identify the support needed to complete the process through workshops and consultations
- ***Designation and plans for the management of mangrove as non-conversion sustainable areas***
 - Review status of ECAN Management Plan for Busuanga and propose recommendations (e.g., amendments, implementation of urgent actions, monitoring and evaluation, etc..)



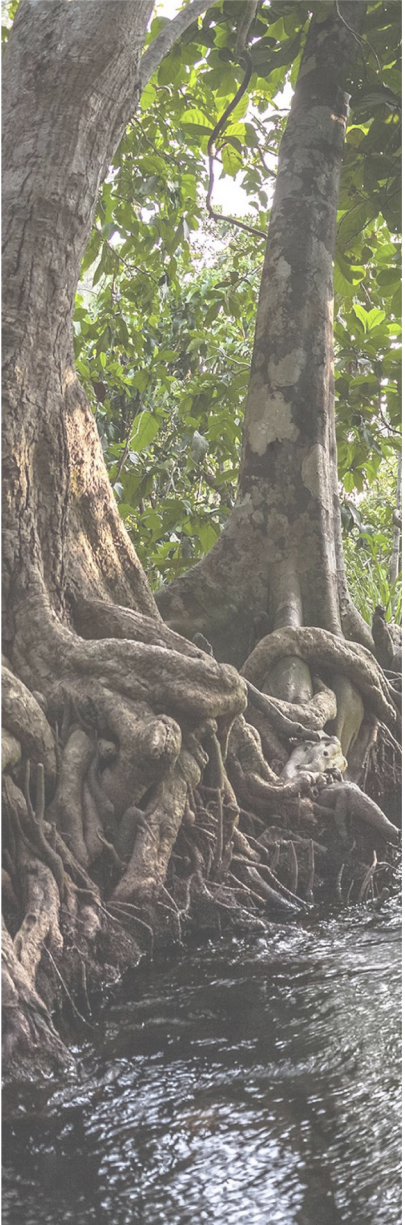
SAP Implementation: Activities

- ***Replanting and enrichment planting on deforested mangrove sites:***
 - Identification of priority sites, procurement of the technical and nursery services, conduct of an actual replanting and enrichment planting activities and maintenance and protection activities
- ***Reforms of laws and regulations for the sustainable use of the mangrove forest***
 - Review of existing policies and past policy recommendations
 - Assessment of the status of its implementation and enforcement of the existing policies and implementation
 - Conduct policy gap analysis and draft policy recommendations



Final considerations of the Project

- *Well crafted management plans of the established/ proclaimed protected areas will ensure ecological, institutional and socio-economic sustainability of management over the target areas.*
- *The project activities such as replanting and enrichment planting are targeted in consonance with other DENR projects, hence, maintenance will be ensured and regulated pursuant to the Department's guidelines and policies.*
- *Reform of local policies/ordinances for coastal habitat management will result in regulatory framework required to guide longer-term sustainability.*





Implementing the Strategic Action Programme for the South China Sea and Gulf of Thailand (SCS SAP Project)

